



Annie Weatherburn  
Global Managing Director



Grant Weatherburn  
Global Commercial Director



Michael Atkins  
Business Partnerships and  
Enrolment Management



Tegan de Freitas  
Global Enrolments Support

## THE ABSI TEAM



"Allow us to assist you"



*"ABSI SERVICES ARE FREE for families, students and education agents. We work directly for our schools as their International Enrolment Directors, and facilitate the entire enrolment application from enquiry to commencement for our schools. We are NOT an education agency - we are the Admissions Centre for our schools."*

### THE ABSI SCHOOLS' INTERNATIONAL ADMISSIONS

*These schools have appointed ABSI to the team of the schools' admissions centre as a group. The focus for ABSI is to assist families and agents to facilitate the enrolment process on behalf of each of these leading schools.*

*All enquiries and applications must be passed via ABSI and not direct to the school.*

*Our team are experienced. Our team has been assisting families, students and selected agents with enrolment enquiries and questions, and further supporting and guiding them through each step of the enrolment procedure on behalf of some of the best boarding schools in Australia, collectively now for over 20 years.*

**CONTACT ABSI OR ANY OF OUR TRUSTED AGENTS FOR ASSISTANCE TO ENSURE YOU SELECT THE 'RIGHT' SCHOOL.**

[enrol@australianboardingschools.com.au](mailto:enrol@australianboardingschools.com.au)

*Our team is well-equipped to assist agents, students and families in selecting one of these fine schools in Australia. ABSI has the expertise and the reputation. We can work with you to determine the important factors in your decision and to assist you in seeking the most appropriate school to meet your needs. Please direct all your enquiries and/or applications to either ABSI direct or to ABSI via our trusted Agents worldwide. See our website for a list of agents working for our schools and with ABSI.*

#### CONTACT DETAILS:

Email: [enrol@australianboardingschools.com.au](mailto:enrol@australianboardingschools.com.au)

Phone: +61 0437 305 640

website: [www.australianboardingschools.com.au](http://www.australianboardingschools.com.au)

PO BOX 290, Margate TAS Australia 7054

#### CRICOS COMPLIANCE

Each school represented by ABSI is included in The Commonwealth Register of Institutions and Courses for Overseas Students (CRICOS), the register prescribed under Section 10 of the ESOS Act and as such is a provider registered and found to comply with all the requirements for registration under the relevant state or territory legislation and Section 9 of the ESOS Act. This includes complying with the requirements of the National Code. CRICOS Provider numbers for each school are listed on the Application form within this brochure. Material specifically outlining each school clearly displays Provider Registration Numbers. ABSI operates, on behalf of each school within and compliant to all regulations pertaining to CRICOS and the ESOS Act and National Code of Conduct.



**TOOWOOMBA**  
ANGLICAN SCHOOL  
Est. 1911

# ABSI



SYDNEY - MELBOURNE - HOBART - ADELAIDE - BRISBANE - GOLD COAST - PERTH



[enrol@australianboardingschools.com.au](mailto:enrol@australianboardingschools.com.au)

[www.australianboardingschools.com.au](http://www.australianboardingschools.com.au)

**ABSI > families > agents > students > schools > ABSI**

DECIDING ON THE RIGHT SCHOOL IS A DIFFICULT DECISION. LET US GUIDE YOU.

ABSI welcomes enquiries and applications from education agents and manages and monitors all agents wishing to represent these schools. Please contact us for school tours/appointments.

# INTRODUCING OUR SELECTION OF AUSTRALIA'S LEADING BOARDING SCHOOLS

THE SCHOOLS of the ABSI group all have the same aim: to ensure your child is offered a first-class education while being cared for within a safe and supervised environment. Each of the schools are highly-regarded, have long and proud traditions and considered prestigious schools in Australia. Do not delay your enrolment application, these schools are in high demand.

## THE MCDONALD COLLEGE, SYDNEY (CO-EDUCATIONAL)

EST. 1912

This is no ordinary day or boarding co-educational college from Kindergarten through to Year 12. Boarding is available from Year 7. **This College offers elite performing arts programs, linked in partnerships with the Australian Ballet, Sydney Dance Company, Conservatorium of Music, Sydney Symphony Orchestra and The National Institute of Dramatic Arts (NIDA).** Famous Australian actors, dancers, singers and musicians have attended this College. If performing arts is not your talent, the College also offers an ELITE TENNIS stream in partnership with Voyager Tennis Academic, with sessions held at Sydney's Olympic Park Tennis Centre. The McDonald College offers these streams alongside an outstanding academic program. Another great feature of this College is its location! Inner Sydney, easy to reach - North Strathfield train station stops at the College, with a gate from platform entering directly into the school grounds. EAL/D is offered by the College 'on-campus' by the College. Wonderful for int'l students requiring extra English.

### From performing arts to performance-centred

While our history is steeped in ballet and dance and these are art forms that we are famous for - we have evolved. **We have expanded our offerings across all streams of performing arts and also offer performance sports - specifically tennis and rhythmic gymnastics.** Performance isn't just about what happens on-stage or on a court. It is also about performance in the classroom, and creativity isn't just about the arts. Creativity also lives in science, technology, and mathematics. From Kindergarten onwards, we foster critical thinking and creative problem-solving. This is key to how our students graduate to become all-round performers.

**Note: Tuition fees vary as to whether Performing Arts or Elite Tennis Streams and ages. Int'l are:**  
**Fees** Tuition\* (AUD) Yrs K-2 = \$31,980; Yrs 3-4 = \$32,988; Yrs 5-6 = \$33,872; Yrs 7-8 = \$39,844  
 Yrs 9-10 = \$40,340; Yrs 11-12 = \$42,388. BOARDING\*: \$26,116. \*Other levies may apply.  
 Homestay organised by family if required. CRICOS NO: 02293K

## THE HILLS GRAMMAR SCHOOL, SYDNEY (CO-EDUCATIONAL)

EST. 1983

A contemporary, independent school offering a wide range of opportunities through its academic, co-curricular and student well-being programs. **A co-educational school from Pre-kinder to Year 12 on one safe and convenient campus.** A non-denominational, private school with a strong values framework. Situated on a beautiful 18ha site, 30km north-west of Sydney. The Hills Grammar School provides a safe and supportive learning community where each student is encouraged to strive for excellence in scholarship, personal development and citizenship.

**International students are an integral part of The Hills Grammar School community.** The School values highly its diverse multicultural student population which is enriched by those who come to us from all over the world. **The High School Preparation Course was introduced in 2014 for newly arrived international students needing to study intensive English within their High School subjects.** Hills provides international students with intensive English, on campus, and within classes integrate EAL int lessons such as Mathematics, PDHPE and House Tutor groups. As a result, students become more confident and their teachers know what support they require from the EAL support team.

**Fees** Tuition (AUD) Yrs K-2 = \$27,515; Yrs 3-6 = \$28,780; Yrs 7-8 = \$39,620; Yrs 9-10 = \$40,970  
 Yrs 11-12 = \$42,660 (incl. compulsory activities). Homestay organised by family. CRICOS NO: 022606

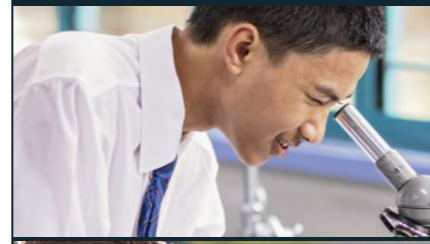
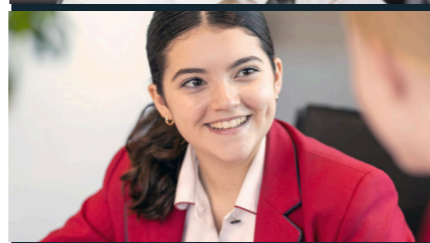
## FRASER COAST ANGLICAN COLLEGE, QUEENSLAND (CO-EDUCATIONAL)

EST. 1995

Fraser Coast Anglican College is well known for consistently strong academic results and adherence to high standards inside and outside of the learning environment. **Academic performance can open many doors for FCAC students, and FCAC understands that there are many other factors required to make a student successful in modern society.**

FCAC's focus is on the holistic development of each of its students; the essence of this philosophy is captured in the College motto - "Enriching Body, Mind and Spirit". This approach is evident in the modern learning programs as well as the range of engaging extra-curricular activities FCAC offers students to assist with the development of their character and areas of personal strength. The community of FCAC is one of inclusion relying heavily on the power of positive relationships between students, parents and staff for the best outcomes for students. At FCAC, we are preparing our students to have the Edge in a modern workforce by developing the skills that industry tells us will increase their attractiveness to future employers. These skills include: Innovation; **STEM specialisation (Science, Technology, Engineering and Mathematics);** Problem solving; Creativity; Social intelligence; Community involvement; Collaboration. We want our students to be: Successful learners; Confident and creative individuals; Active and informed citizens.

**Fees** Tuition\* Years 7-9 = AUD\$22,188 Year 10-12 = AUD\$24,568 (\*Other levies may apply)  
 Homestay = AUD\$13,440 per annum. Organised by School or Family. CRICOS NO: 015926



# OUR SCHOOLS ARE LOCATED IN SAFE LOCATIONS ACROSS AUSTRALIA

AUSTRALIA it is said, is the land of opportunity - it is also referred to as the 'lucky' Country! Our selection of schools are situated in stunning and desirable locations across this lucky country. No matter which destination you select there are outstanding Universities linked to these schools. You can also apply interstate to any university following graduation from any of these schools. Go to the ABSI website. You will find a photo gallery for each school and a school snapshot flyer.

## BRISBANE GRAMMAR SCHOOL, (BOYS ONLY) BRISBANE, QUEENSLAND EST. 1868

Brisbane Grammar School is a non-selective independent day and boarding school for boys, located on a wonderfully landscaped and heritage listed site **on the edge of Brisbane's CBD.** It now caters for about 1700 boys in Years 5 to 12. Brisbane Grammar is ranked at the top of the leaderboard for its academic outcomes. **The School has an enviable reputation in Queensland and Australia for the quality of its graduating students and is justifiably proud of its Old Boys and the contributions that they have made in science, medicine, business, education, law and the military, both in Australia and internationally.**

Composed of Years 5 to 8 (Middle School) and Years 9 to 12 (Senior School).

**Boarding from Year 5.** Each operate in an integrated manner and provide a seamless transition from Year 8 into Year 9, while providing an educational environment which is tailored to the needs of the particular age groups in each section of the School. The School is a member of the Great Public Schools' Association of Queensland (GPS) and as such is one of nine schools in Brisbane and its surrounds which, as an association, provide opportunities for students in Years 5 to 12 to participate in sixteen different sports and activities during the year.

**The welfare of a BGS student is a pivotal concern to all.** From Deputy Headmaster - Students to Heads of Year and Form Teachers, there are a number of adults at the School who not only monitor each student closely but provide important role models for boys as they make their journey from childhood to adulthood.

**Fees** Tuition\* (AUD\$) Years 5-6 = \$33,460 Year 7-12 = \$41,260 (\*Other Levy fees may apply)  
 Boarding\* (AUD\$) Years \$23 840; Years 7 to 12: \$29 780 CRICOS NO: 00489C

### "CHURCHIE"

## - ANGLICAN CHURCH GRAMMAR SCHOOL (BOYS ONLY), BRISBANE EST. 1912

Anglican Church Grammar School, known internationally as **Churchie**, has as its central mission **the development of young men of good character**, strong intellect and generous spirit who will move confidently into the global community and who will use their talents and gifts to lead and serve others. Churchie is an independent school for day boys and boarders, with about 1800 students from Reception to Year 12. There are approximately 530 boys in the Preparatory School and 1250 in Senior School. **Boarding is an important part of the School's life, and over 170 boys from Years 7 to 12 are accommodated at Churchie.** As a member of the Great Public Schools (GPS) Association, Churchie participates in a range of academic, sporting and cultural competitions against other long-standing Brisbane schools. Churchie's history and traditions, spanning since 1912, provide the basis for exceptional educational programmes and personal development opportunities tailored to meet the needs of boys.

**Churchie's seven-day-a-week boarding philosophy provides a place for boarders to thrive.**

**Fees** Tuition\* (AUD) Yrs R-2 = \$35,592; Yrs 3-4 = \$36,117; Yrs 5-6 = \$36,532; Yrs 7-10 = \$44,143  
 Yrs 11-12 = \$43,013; BOARDING\*: Yrs 7-10 = \$37,902; Yrs 11-12 = \$39,084.  
 \*Other levies may apply. CRICOS NO: 00487E

## TOWOOMBA ANGLICAN SCHOOL, QUEENSLAND (CO-EDUCATIONAL) EST. 1911

As Australia's only coeducational K-12 Day and Boarding School offering Boarding from Years 1 to 12, Toowoomba Anglican School's family boarding culture is a point of difference.

A specialist preparatory boarding school, having won awards for providing primary-aged boarding care for young students, and also older students. **In 2020 and 2021 this school was named an Excellence Awardee in the Australian Education Awards 'Boarding School of the Year' category.** Toowoomba Anglican School sits on the edge of the Great Dividing Range overlooking the captivating Lockyer Valley with some of the most beautiful views in the city. **An affordable, safe location enabling all students to focus on their studies in order to gain entry to leading Universities.** With the campus centring around Main School Close, a place where students, staff and families gather, the school has a village-like feel. But a village is more than buildings or grounds: it's about the people who live and learn there and the way in which they interact to create a community. **The strongest, most persistent and lasting impression created by the school is precisely this sense of community.** Life is co-educational and Toowoomba Anglican School (TAS) provides a naturally supportive environment for boys and girls to learn from one another. An area of focus as the students move through the Secondary Years is that of providing a flexible curriculum. What that looks like for one student is very different for another.

**Fees** Tuition\* (AUD) Yrs P-2 = \$17,007-\$18,129; Yrs 3-6 = \$18,692 - \$20,938; Yrs 7-8 = \$22,841  
 Yrs 9-10 = \$24,413; Yrs 11-12 = \$25,743 BOARDING\* Years 1-12: \$21,821.  
 \*Other levies may apply. CRICOS NO: 00712A